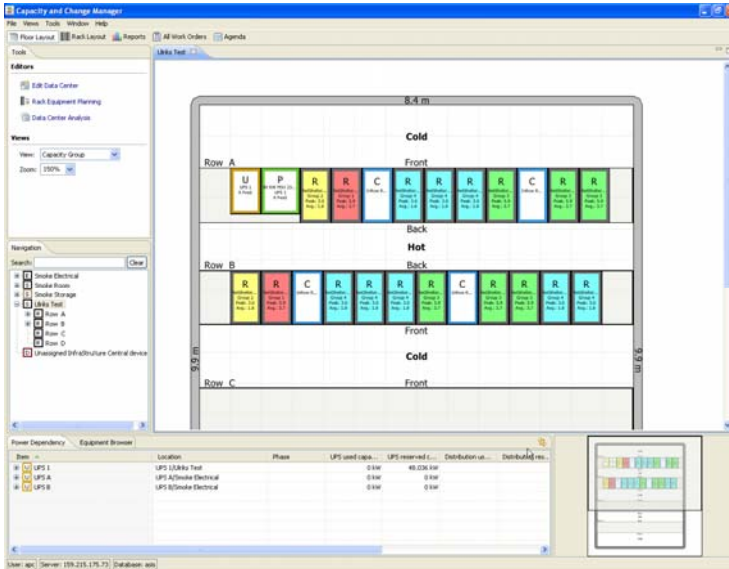
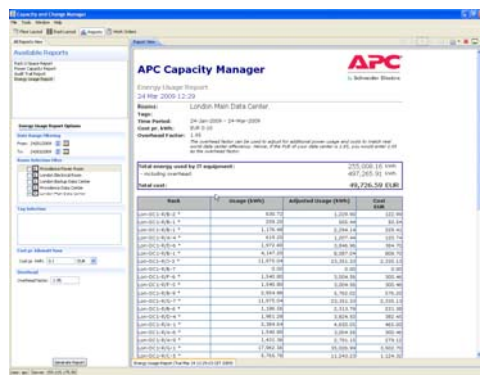


Capacity Manager

Balance IT demand with physical infrastructure supply



Planning and optimizing utilization of actual power, cooling and rack capacities via shared datacenter model, enabling efficient equipment provisioning and right-sizing of your datacenter



Datacenter Management Application for InfraStruXure® Central

Capacity Manager predicts the optimal location for physical infrastructure and rack-based IT equipment based on the availability and requirements of power, cooling and space; and user defined requirements such as redundancy, network and business use grouping.

With its sophisticated simulation based on live data, Capacity Manager proactively analyzes the impact of changes before they occur, enabling informed decision making and planning, ensuring that your physical infrastructure provides the redundancy, power and cooling capacity required.

Capacity Manager includes a robust inventory management application which provides a visual model of the room and rack layout. Rack-level views enable easy tracking of IT assets and available space, power dependencies as well as energy costs.



Energy Cost Management

Capacity Manager add-on module, enabling cost analysis of used energy on a kW/h basis, detailed to the rack level

Capacity Manager Options

Integrates with Change Manager

Inventory management allows for easily tracking and executing moves, adds and changes of equipment in the datacenter.



| Predictable Planning | Benefits |
|---|--|
| Physical equipment planning | Quickly locate the optimum spot for that next server based on space, cooling and power needs |
| 3-phase load balancing | Automatically distribute and track single and three-phase equipment power draw, ensuring all three phases on the power system carries a balanced load |
| Design analysis | Model the effects of and compare alternative layouts through detailed design analysis |
| Airflow analysis | Simulate cooling scenarios in your data center, instantly visualizing the cooling effect on your infrastructure. |
| Floor and rack load weighting | Includes the consideration for floor and rack weight limits when placing new Equipment |
| Power and network port count | Recommends best location of new equipment based on available power and network Ports |
| Capacity Analysis | Benefits |
| Available capacity | Understand available capacity by calculating actual space, power and cooling consumption against data center architecture constraints |
| Graphical power gauge | Provide visibility to planned and real-time data through graphics, outlining available Capacities |
| Measured power data | Prevent overloads through visibility to average and peak power usage by measuring actual consumption through metered rPDUs |
| Reporting Capabilities | Benefits |
| Capacity reports | Shows planned and actual power data in one view, enabling detailed planning of future power needs |
| Energy cost management | Enables accurate cost analysis of used energy on a kW/h basis, detailed to the rack Level |
| Inventory Management | Benefits |
| Inventory management | Management of inventory located at both room and rack level, providing an instant overview of data center assets |
| Virtual store room | Keep track of new devices from arrival on site in the virtual store room, as best practices recommend |
| Device catalog | Utilize the extensive library of physical infrastructure and IT devices from leading vendors |
| Integration | Benefits |
| Integration with InfraStruXure Central & Change Manager | Ensure mature and synchronized data throughout the entire datacenter life cycle through common data model shared with InfraStruXure Central & Change Manager |

For further information; <http://www.apc.com/products>

