

Energy Management Solutions from Schneider Electric



for Cisco EnergyWise

Provides real-time, granular measurement capabilities for better visibility into energy savings across an entire organization

The integration of APC's award winning APC InfraStruXure® Central platform with Schneider Electric's building management systems allows for the extension of Cisco® EnergyWise as a platform for power management across IT and the building systems of an organization. This enables managers to not only understand the needs of an IT environment, but how the data center physical infrastructure and the network and building systems can support those needs.

The solution allows for the management of disparate systems in order to manage the power in an enterprise building and as well as attached devices with a common view and set of policies.

Reduce resource usage while maintaining business productivity

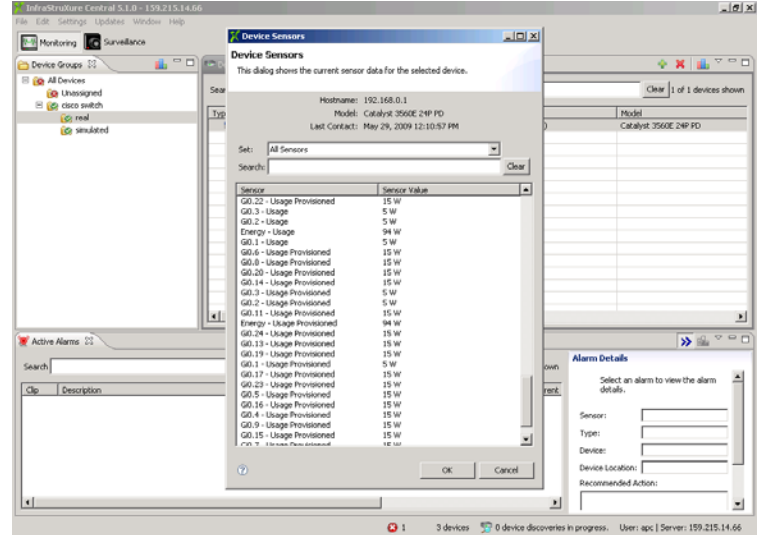
- Intelligently and proactively manage power consumption and consistently enforce policies to provide lower energy consumption.

Reduce the environmental effects of business operations

- Predict, measure and analyze the physical layer impact on business applications

Meet green corporate and social responsibilities

- Control and optimization of all energy-using equipment within buildings.



InfraStruXure Central monitors and collects 111 data points on Cisco Catalyst Switches.



Confidently Make Critical Business Decisions

with APC Data Center Physical Infrastructure Management

- How do you align capacity with demand today?
- How do you know you are making the most cost effective and energy efficient decision?
- About how much money do you spend each year to power your enterprise?

The Cisco | Schneider Electric Partnership Mission

Cisco and Schneider Electric collaborate to provide innovative solutions to demanding energy requirements. The partnership combines global leaders in critical power and cooling services and building management with Cisco EnergyWise. Together, the team delivers resilient, energy-efficient, and cost effective solutions to support today's IT environments.



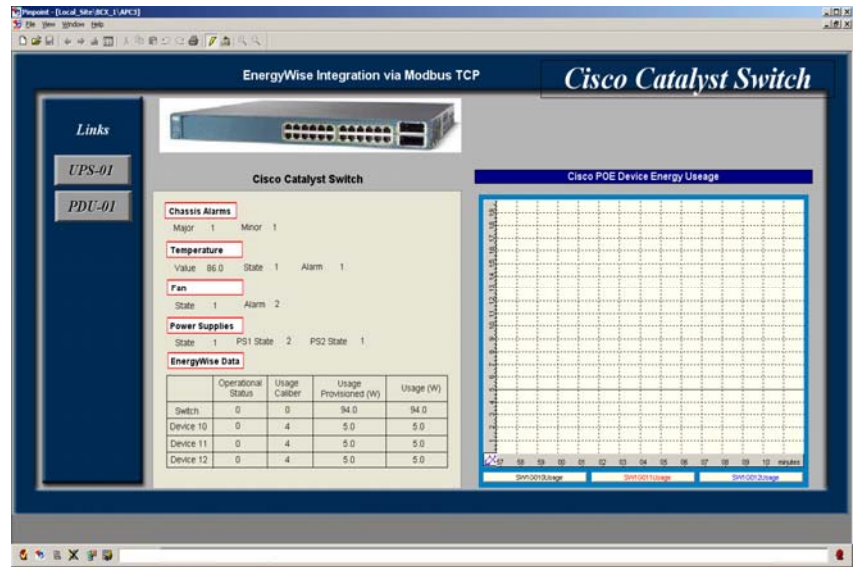
Solution Components

APC Data Center Physical Infrastructure Management™

- **InfraStruXure Central**- A scalable monitoring system which collects, organizes and distributes critical alerts, surveillance video and key information, in real time providing a unified view of complex physical infrastructure environments from anywhere on the network.
- **Capacity Manager**- Using real-time data collected from InfraStruXure Central Capacity Manager instantly simulates the impact of changes before they occur, enabling informed decision-making and enhanced planning.
- **Change Manager**- Works with InfraStruXure Central to keep track of device properties and physical equipment locations, automatically generating work orders and keeping human error at a minimum.

TAC Andover Continuum

- A full system of controllers and user interface software products that can be combined in many different ways to customize the system to site requirements;
- Whether a single building or across multiple locations, Andover Continuum is scalable and adaptable;
- Andover Continuum can talk to the entire building and share information among systems including chillers, fire alarm panels, air handlers, CCTV systems, lighting controllers, and more;
- IT-friendly, supporting major communication, desktop IT, and building automation standards.



TAC Andover Continuum allows for viewing, monitoring and reporting on Cisco POE and IP device states, power provisioned and power used in real-time.

Cisco EnergyWise

- Reduces energy costs and greenhouse gas emissions (GHG) footprint;
- Monitors the power of all Cisco network-connected devices, from Power over Ethernet (PoE) devices to IP-enabled building controllers;
- Reports aggregated power consumption to provide a clearer understanding of an organization's power-consumption habits;
- Optimizes overall power usage based on user-created policies across the entire corporate infrastructure;
- Provides reports of current power conditions and suggests potential changes;
- Regulates companywide energy consumption using scalable domain approach which brings IT and facility networks together.

Installation Requirements

- **APC InfraStruXure Central Basic, Standard or Enterprise version 5.1 or greater;**
- **TAC Andover Continuum**
- **Cisco Catalyst® switches 2xxx and 3xxx Series with EnergyWise technology installed**

